

NOISES OFF

APS newsletter March 2012

AMATEUR PLAYERS OF
SHERBORNE

WYRD SISTERS

Adapted by Stephen Briggs
from the Discworld book by
Terry Pratchett

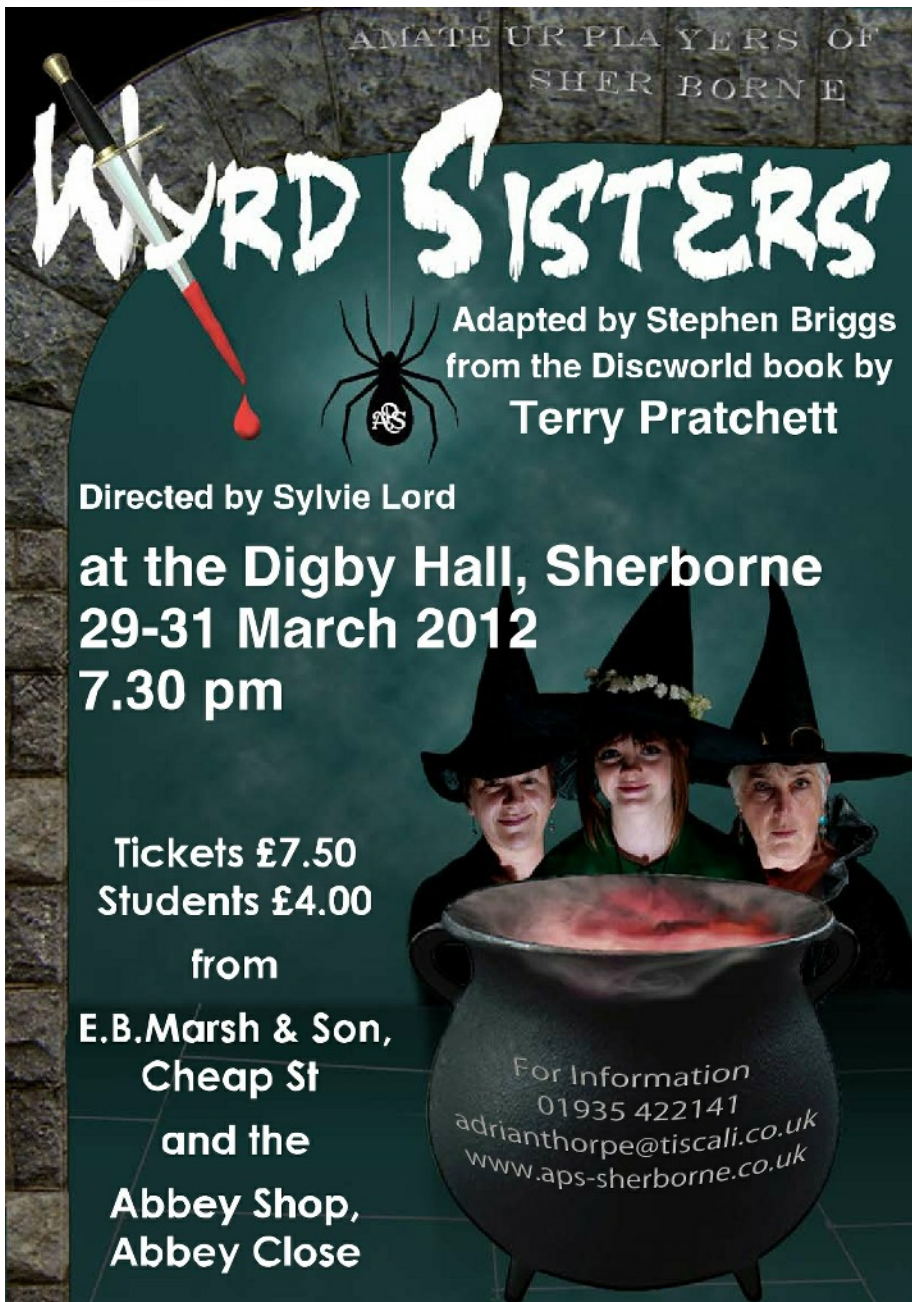
Directed by Sylvie Lord

at the Digby Hall, Sherborne
29-31 March 2012
7.30 pm

Tickets £7.50
Students £4.00

from
**E.B. Marsh & Son,
Cheap St
and the
Abbey Shop,
Abbey Close**

For Information
01935 422141
adrianthorpe@tiscali.co.uk
www.aps-sherborne.co.uk



Thanksgiving Service

Monday 6 February: By 2 pm an estimated 250-300 relatives and friends gathered in the Nave of Sherborne Abbey for Jennie's Thanksgiving Service.

Created by Jennie, it was conducted by the Reverend Jono Tregale, who also gave the sermon. There were her chosen hymns to which we raised our voices, a Bible reading by Andrew Ward, her nephew, prayers from Reverend Lesley McCreadie and a moving tribute from Stuart, our Chairman.

The retiring collection amounted to £910 to be shared jointly between the British Heart Foundation and St Paul's Church Community Project (Sherborne).

That tribute, plus a list of productions, a selection of photos and a slideshow can be viewed on our website.



Post play review of Noel Coward's 'Design for Living' in Salisbury station's cafe while waiting for the 17.53 train back to Sherborne.

The morning 'Theatre Day' was a worthwhile insight into the staging the play, which bubbled with Coward's wit and spirited performances.

Very many thanks to David Smith for once again organising our annual Theatre Visit.

GET READY TO ENJOY YOURSELVES

Spread the word - they're coming! The kings, dukes, duchesses, jesters, babies and of course the witches. A pastiche on Shakespeare's 'Macbeth' with a sprinkling of 'Hamlet' and a smidgeon of 'King Lear', **'Wyrd Sisters'** is a hilarious, fast-paced play full of 'diverse alarums and excursions.'

A stunning set, atmospheric lighting, startling sound effects and hours of rehearsals (still

going on) all add up to an amazing unmissable experience.



And don't forget to come along to the After Show party on Saturday 31 March where we unwind and celebrate all the time, energy and hard work in putting on yet another successful APS play. The 3 Rs will play for your pleasure.

Programme of events 2011-2012 season

Sat 23 March to Sun 1 April:
Spring production, 'Wyrd Sisters' Performances 29 to 31 March

Tuesday 17 April:
Play-reading, led by Charles Napier.

Friday 18 May:
Annual Dinner at Castle Gardens.

Wednesday 20 June:
Poetry evening *Life and Death on Mount Helicon* led by Maurice Freeland. In Paddock Gardens (weather permitting)

Friday 20 July:
AGM and Summer Party. Venue to be decided.

All events at 7.30 pm in our Club Room at The Old Chapel unless indicated otherwise.

LAUNCH OF SHERBORNE LITERARY SOCIETY Mon April 23

It's Shakespeare's birthday!
It's World Book Night.
It's St George's Day.
What better date for the launch of Sherborne's newest society - the Sherborne Literary Society www.sherborneiltsoc.org.uk. You can join up by email or make a date for the launch party on **Monday 23rd April** at the Catholic Church Hall in Westbury.

There will be two sessions both **by invitation only**. Numbers are limited for catering and accommodation reasons.

For an invite, contact them via email under their website **Contact Us** tab or write to Sherborne Literary Society c/o Coverack House, The Avenue, Sherborne DT9 3AH.

Invitations issued on a first-come first-served basis and issued at the end of March. After the event you can pick up membership registration forms at the Tourist Office.

NODA SUMMER SCHOOL
NODA Summer School offers a great opportunity for all those involved in amateur theatre.

Following the latest trends in professional theatre, it offers a variety of week long and 3 day courses in a mix of disciplines for performers, directors and technicians.

With competitive course fees and top class residential facilities at the University of Warwick you are guaranteed a fun packed week of top quality training.

NODA Summer School 2012 will run from Saturday 4th - Saturday 11th August 2012.

For full details of courses, tutors and application form, go to www.noda.org.uk



THE STATE OF THE ARTS
Sherborne House is to become a tourist attraction. The 18th century stately home, which was visited by English novelist Charles Dickens, will be restored, refurbished and renovated.

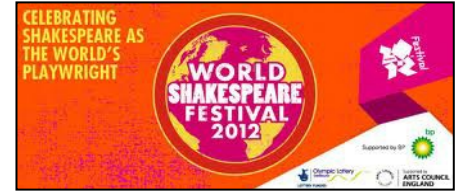
Plans include an art gallery and cafe, the restoration of the mural staircase by Sir James Thornhill to its original condition - and the building of 44 homes in the back garden.

And now, the latest from **Sherborne Community Arts Centre**. Coming soon, they are aiming to release a short DVD which includes an animated "fly through" of the Arts Centre.

Starring Valerie Singleton it sets out what needs to be done to complete the building.

They are also seeking Volunteers, and Donations and Legacies. Click the **Contact Us** link at www.scac.org.uk

WORLD SHAKESPEARE FESTIVAL LAUNCHES NEXT MONTH



New productions of 'Timon of Athens', starring Simon Russell Beale and directed by Nicholas Hytner, and 'King Lear', starring Jonathan Pryce and directed by Michael Attenborough, are among the many Shakespeare works that will be presented as part of the World Shakespeare Festival, a seven-month celebration of the playwright that is being planned in Britain for 2012.

The programme will include 70 productions and exhibitions taking place primarily in London and Stratford-upon-Avon, and involving more than 50 arts groups from around the world, as part of the London 2012 festival, which is the culmination of London's Cultural Olympiad.

Other planned productions include 'Romeo and Juliet in Baghdad', presented by the Iraqi Theater Company; 'Julius Caesar', directed by Gregory Doran and set in present-day Africa; 'Troilus and Cressida', directed by Elizabeth LeCompte and Rupert Gould and presented as a collaboration between the Royal Shakespeare Company and the Wooster Group; and 'Desdemona', which combines the efforts of Toni Morrison, Peter Sellars and the Malian singer-songwriter Rokia Traoré.

The World Shakespeare Festival will run from April 23, considered Shakespeare's birthday (and is also the date on which he died) through to November 2012.

For full details of programme, dates and venues check out the website at:

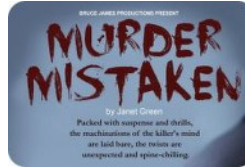
www.shakespearefestival.org.uk

Arts SCENE

A selection of what's
on around and about

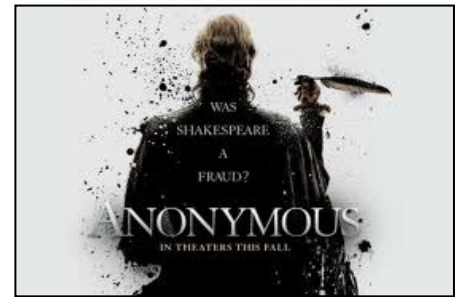
A CASE OF MURDER MISTAKEN AT THE OCTAGON

Murder Mistaken is a mystery thriller set in 1950's England. The charming Edward Bare is a cold, calculating man with a passion for older women, or more truthfully their money. So when his rich wife threatens to outlive her usefulness he has a decision to make. Having hastened her end, he discovers an unpleasant surprise in her will. Determined not to make the same mistake again, Edward marries a rich widow but when an attractive and wealthy lady arrives on the scene, will Edward revisit his murderous past?



Packed with suspense and thrills, the workings of the killer's mind are explored as the spine-chilling plot thickens.

It's on at 7.30 pm in the Octagon, Yeovil Monday 23 April and Tuesday 24 April.



DID HE WRITE OR DIDN'T HE?

'Anonymous' a sort of political thriller advancing the theory that it was in fact Edward De Vere, Earl of Oxford who penned Shakespeare's plays; set against the backdrop of the succession of Queen Elizabeth I, and the Essex Rebellion against her. The DVD is due for release 5 March.



**Outside Edge
Tacchi-Morris
Arts Centre
Taunton
13-17 March
at 7.30 pm
Matinee Sat
at 2.30 pm**

Set in a cricket Pavilion, 'Outside Edge' deals with an eventful Saturday afternoon in the lives of five men and four women. Roger struggles to keep together his team to play against the British Railways Maintenance Division Yeading East, while the wives and

girlfriends of his players help and hinder to devastating and hilarious effects.

The action takes place at the cricket pavilion before and during a match. While the play is ostensibly about cricket, it's actually about relationships - lifting the lid on all manner of angst and extra-marital shenanigans among the lead characters. See P4 for contact details.

**Yeovil
cineworld**

Thurs 1 March: Shakespeare's **The Comedy of Errors**. Lenny Henry heads the cast in a contemporary staging of this frantic comedy. At 7 pm

Thurs 29 March: Goldsmith's **She Stoops to Conquer**. One of the great, generous-hearted and ingenious comedies of the English language. At 7 pm

Sat 7 April: **Manon** Massenet's operatic tale of a girl that's a little bit too attractive. At 5 pm

Sat 14 April: **La Traviata** Verdi's best known opera is graced by one of its most moving heroines. At 6 pm

Call 0871 200 2000 or Google Cineworld, Yeovil

Stage Talk, the monthly TV programme dedicated to amateur theatre groups is on at **5 pm Sunday 4 March**. Catch it on Showcase TV Sky Channel 201, Freesat 403. It's also available online at www.stage-talk.tv

Taunton Operatic Society stage **The Full Monty** at the Tacchi-Morris Arts Centre, Taunton from Mon 23 to Sat 28 April.

In a desperate act to raise money to win back his son, Jerry enlists the help of his best mate Dave and 4 other unemployed steel workers, each with their own anxieties and fears to form a new male strip group. Six ordinary guys with one unique selling point ..The Full Monty.

A riotously funny, poignant and at times moving tale of friendship and camaraderie in the face of adversity will touch your heart. Will they or won't they, there's only one way to find out. See contact details page 4.

From Drama Club presents - **The Graduate** at the Merlin Theatre, Frome 25 April 2012 - 28 April 2012 - 7.45 pm.

This classic story about a naive college graduate adrift in the social and sexual mores of the 60's captures with hilarity and insight the alienation of youth and the disillusionment of an era.

California in the 60's, Benjamin Braddock has got excellent grades, proud parents and, since he helped Mrs Robinson with her zipper, a fine future behind him. A cult novel and a classic film, now Benjamin's sexual odyssey is brought vividly to life onstage.

See page 4 for more info.

DATES FOR YOUR DIARY

MARCH 2012

Thurs 1 to Sat 31	Red Light Winter UK premiere	Theatre Royal, Bath 7.45 pm Mat Sat 2.30 pm
Fri 9 to Sat 10	A Midsummer Nights Dream RumDoxy Theatre Company	Mission Theatre, Bath 7.30 pm
Tues 13 to Sat 17	Outside Edge See page 3	Tacchi-Morris Arts Centre, Taunton 7.30 pm Mat Sat 2.30pm
Thurs 15 to Sat 17	And Then There Were None Agatha Christie thriller	Strode Theatre 7.30 pm
Thurs 15 to Sat 7 April	The Seven Year Itch George Axelrod	Salisbury Playhouse Times vary check Box Office
Mon 19 to Sat 24	Duets Play by Peter Quilter	Swan Theatre, Yeovil 7.45 pm
<i>APS event</i> Thurs 29 to Sat 31	Wyrd Sisters Award-winning APS company	Digby Hall, Sherborne 7.30 pm

APRIL 2012

Tues 10 to Wed 11	The Hound of the Baskervilles Oldham Colliseum Theatre	Brewhouse, Taunton 7.45 pm
Mon 16 to Sat 21	Blue Remembered Hills Dennis Potter play	Mission Theatre, Bath pm
<i>APS event</i> Thurs 19	A play reading Led by Charles Napier	Club Room, The Old Chapel 7.30 pm
Thurs 19 to Sat 21	Dead Guilty Psychological thriller	Warehouse Theatre, Weymouth 7.30 pm
Sat 21	Born in the Gardens Creative Cow	Shaftesbury Arts Centre 7.30 pm
Mon 23 to Tues 24	Murder Mistaken Tense psychological thriller	Octagon, Yeovil 7.30 pm
Mon 23 to Sat 28	The Full Monty Taunton Operatic Society	Tacchi-Morris Arts Centre, Taunton Times vary see website
Wed 25 to Sat 28	The Graduate Frome Drama Club	Merlin Theatre, Frome 7.45 pm

Shaftesbury Arts Centre: Box Office 01747 854321 www.shaftesburyartscentre.org.uk

Octagon: Box Office 01935 845321 www.octagon-theatre.co.uk

Brewhouse Theatre: Call 01823 283244 www.thebrewhouse.net

Tacchi-Morris Arts Centre: Box Office 01823 414141 www.tacchi-morris.com

Salisbury Playhouse: Box Office call 01722 320333 www.salisburyplayhouse.com

Theatre Royal, Bath: Call 01225 448844 www.theatreroyal.org.uk

Merlin Theatre: Box Office 01373 465949 www.merlintheatre.co.uk

Mission Theatre: Call 01225 428600 www.missiontheatre.co.uk

Strode Theatre: Call 01458 442846 10-2 pm Mon -Sat www.strodetheatre.co.uk

Warehouse Theatre: www.weymouthdramaclub.co.uk

Swan Theatre: Tickets on sale from 28 February Box Office 01935 462781 www.swan-theatre.co.uk

NB: As Diary Dates are compiled in advance, do check with the venue for any programme changes.



If you would like any local performances mentioned in the newsletter please send details to me at:
jim.reville@btinternet.com or call me on 01935 814626. Please leave your message if I'm not available and I'll ring you back.

April Copy Deadline: Wednesday 28 March

Last Word...

“Things that try to look like things often do look more like things than things. Well-known fact.”

Granny Weatherwax